

**KILKENNY CENTRAL ACCESS SCHEME
PRESENTATION
JULY 2014**

Contents



POLICY FRAMEWORK



PROJECT MANAGEMENT/DELIVERY



SCHEME/BRIDGE DETAILS

Policy Framework

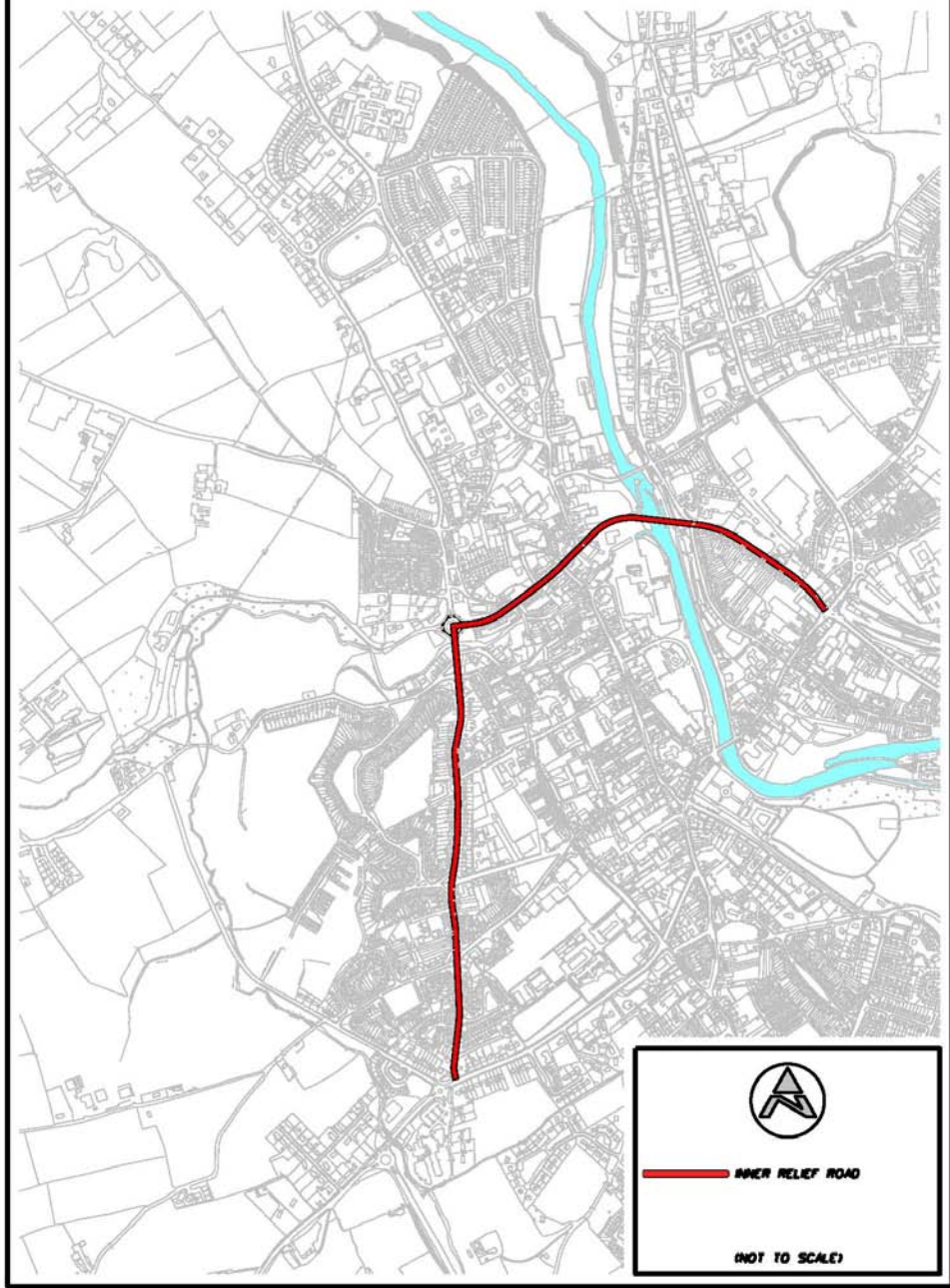
- 1978 Kilkenny City Traffic and Land Use Review
- Study included a recommendation for ***‘a new Bridge across the River Nore, so located as to provide a direct connection between Wolfe Tone Street and St. Canice’s Place, plus a new link road extending Dominic Street to Lord Edward Street/Granges Road ’***

Policy Framework

1980 Kilkenny City Development Plan

- Committed to the implementation of the findings of the 1978 Kilkenny Traffic Review and Land Use Study
- Specific objective of Plan to ***‘provide a new city centre bridge, between Wolfe Tone Street and St. Canice’s Place and a new Bridge and approach roads connecting Dominic Street to Butt’s Green’***
- ***Map 1 (John St./Wolfe Tone St./St. Canice’s Place/Dean Street/Domincic St./Stephen St./Old Callan Rd./Callan Rd.)***
- Actions further to City Development Plan provisions;
 - River Bed site investigations (1984)
 - Bridge Report and Design (1985)
 - CPO 2 (1985) Inner Relief Road (Dean Street)

Map No.1 1980 Kilkenny City Development Plan



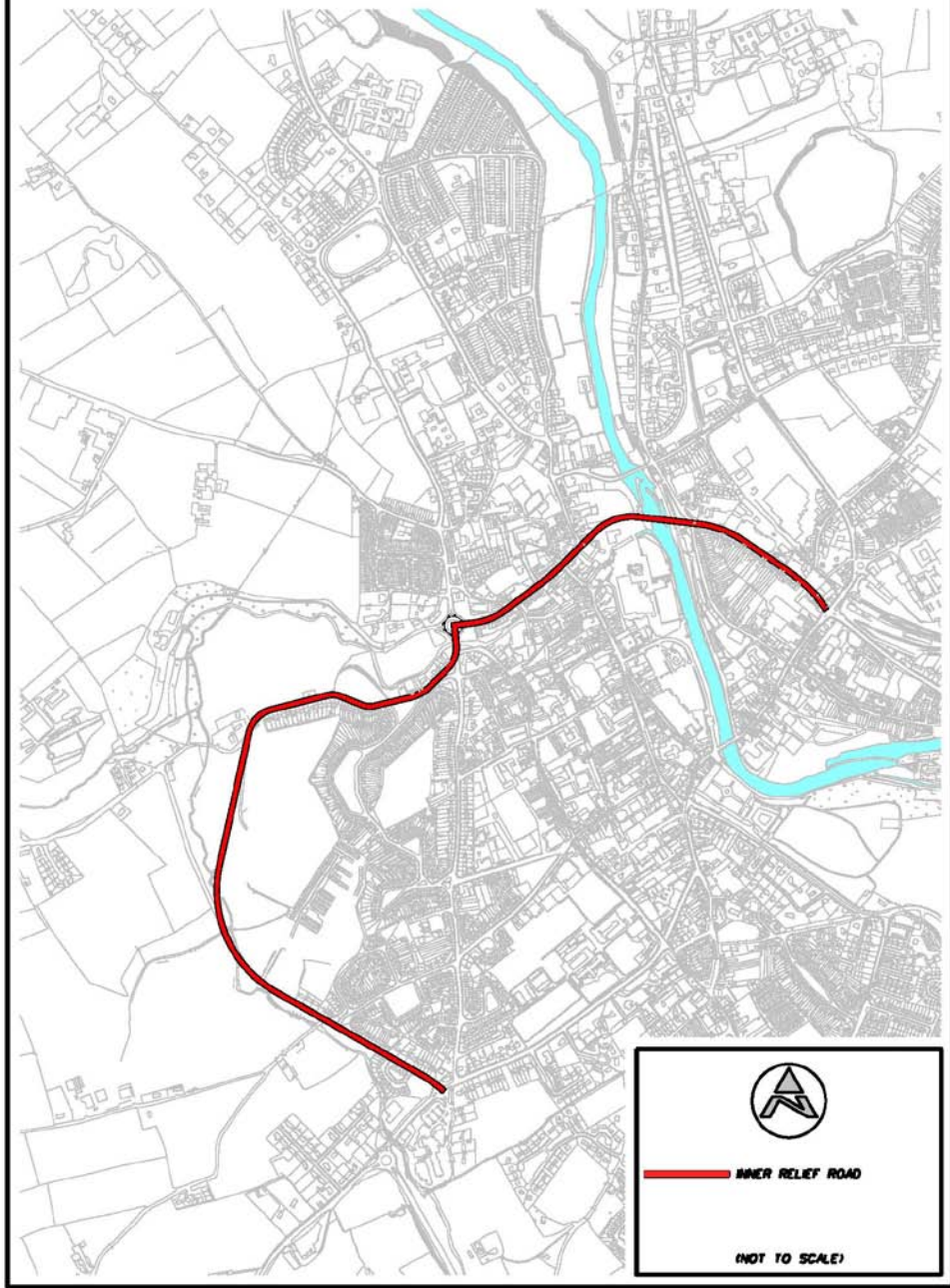
Policy Framework

1986 Kilkenny City Development Plan

- To implement the recommendations of the Traffic and Land Use Plan 1978 generally
- Objective to - ***construct a new 10m carriageway, bridge across the River Nore together with associated approach roads to provide a direct link between Wolfe Tone Street and St. Canice's Place***
- ***Map 2*** (John St./Wolfe Tone Street/St. Canice's Place/ Dean Street/Kennyswell Road/Circular Road/Callan Road)
- Actions further to City Development Plan provisions;
 - New Waterbarracks Bridge and associated approach roads (1987)
 - CPO 2 (1988) Inner Relief Road Vicar Street (1988)

Map No.2

1986 Kilkenny City Development Plan



 **INNER RELIEF ROAD**

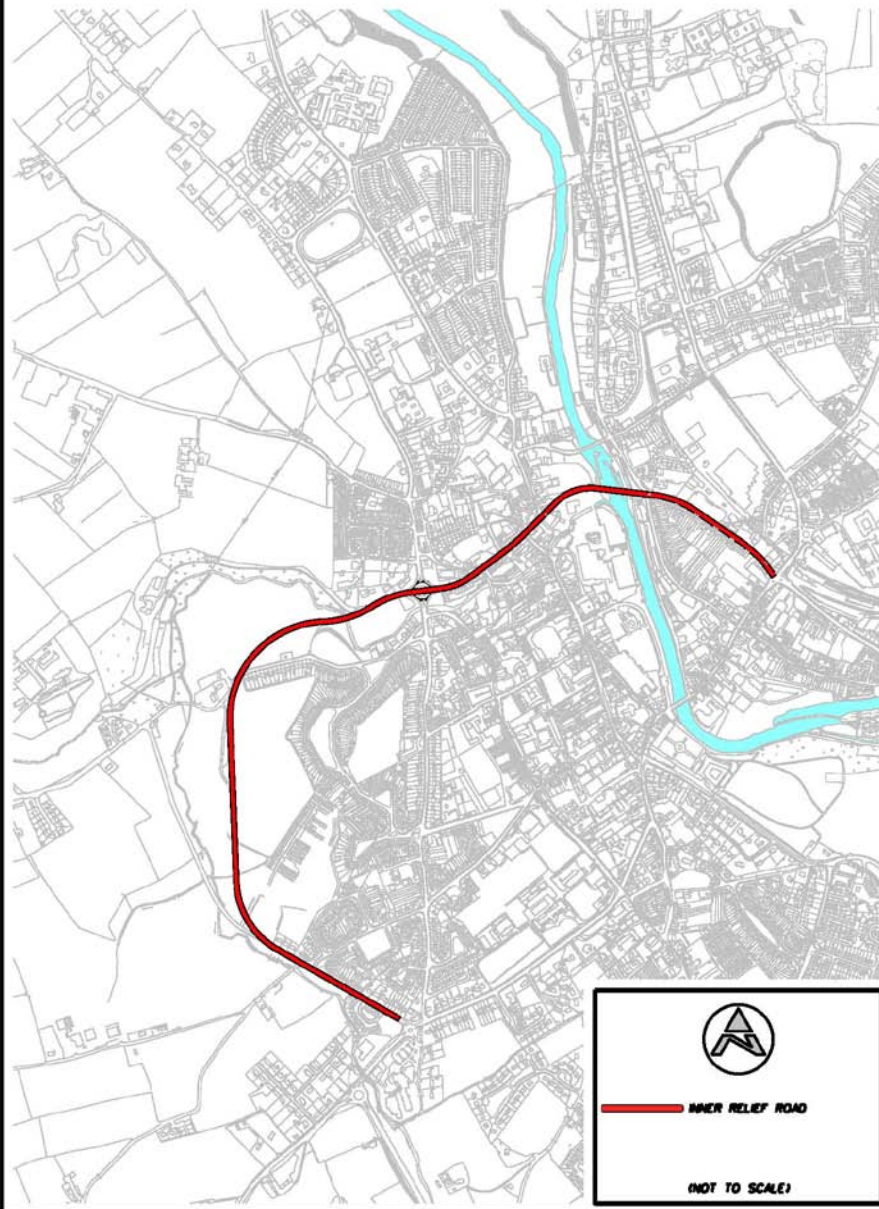
(NOT TO SCALE)

Policy Framework

1994 Kilkenny City & Environs Development Plan

- Objective to *‘complete Phase 2 of the Inner Relief Road which will link the Callan Road with Wolfe Tone Street via Dean Street and St. Canice’s Place and a new Nore Bridge south of Green’s Bridge.’*
- **Map 3**
- Actions further to City Development Plan provisions;
 - Kilkenny Traffic Study (Kilkenny Chamber of Commerce) reiterates need for new bridge crossing linking Wolfe Tone St. and St. Canice’s Pl. (1995)
 - Kilkenny Traffic Study (Kilkenny Local Authorities) reiterates need for new bridge crossing linking Wolfe Tone Street and St. Canice’s Place (1996)
 - 2000 Development Approval (Part X) sought for Stage 2 of Inner Relief Road (west of Waterbarracks) but proposals not approved

Map No. 3 1994 Kilkenny City & Environs Development Plan

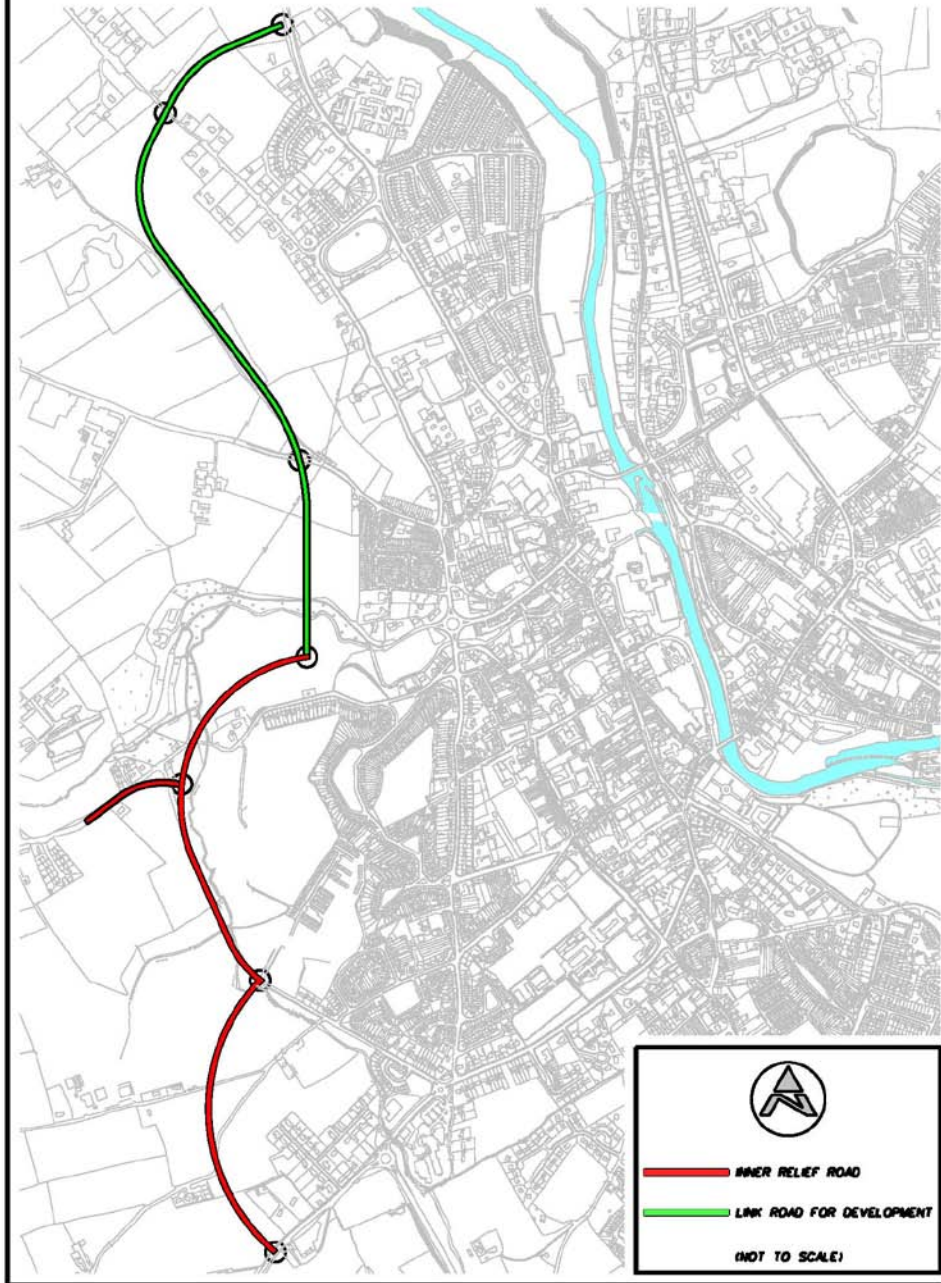


Policy Framework

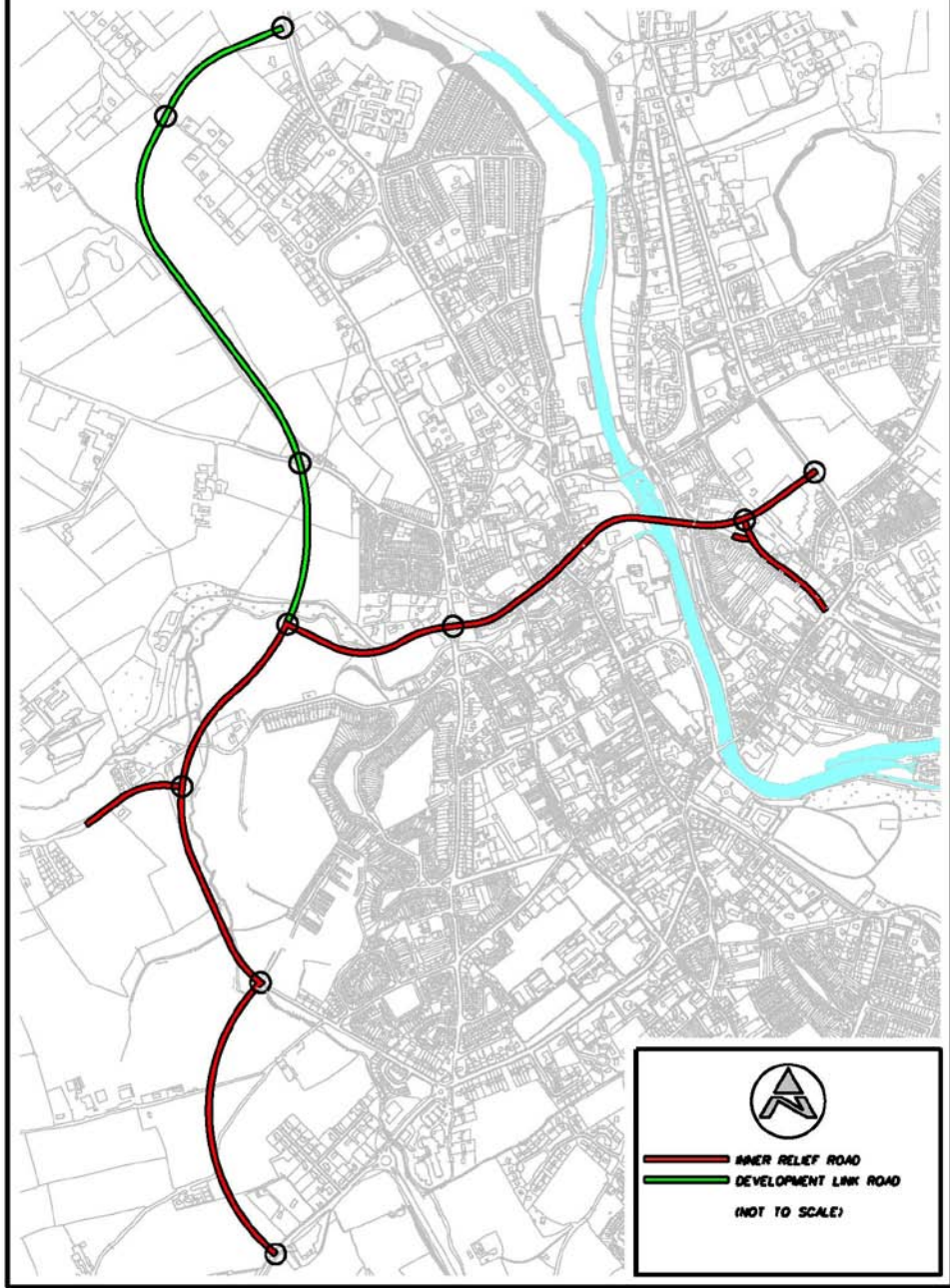
2002 Kilkenny City & Environs Development Plan

- Objective to *develop the Inner Relief Road from Kilcreene to Callan Road and to Freshford Road.*
- The remainder of the route i.e. Kilcreene to Dublin Road was omitted from the Development Plan (**Map 4**)
- 2004 Western Environs Local Area Plan supported the development of the road links above and stated that the Plan is intrinsically linked to completion of the new city centre bridge
- 2004 Variation to 2002 Plan to include new bridge crossing and Castlecomer Road link (**Map 5**)

Map No.4 2002 Kilkenny City & Environs Development Plan



**Map No. 5 Variation to 2002 Kilkenny City and Environs
Development Plan**



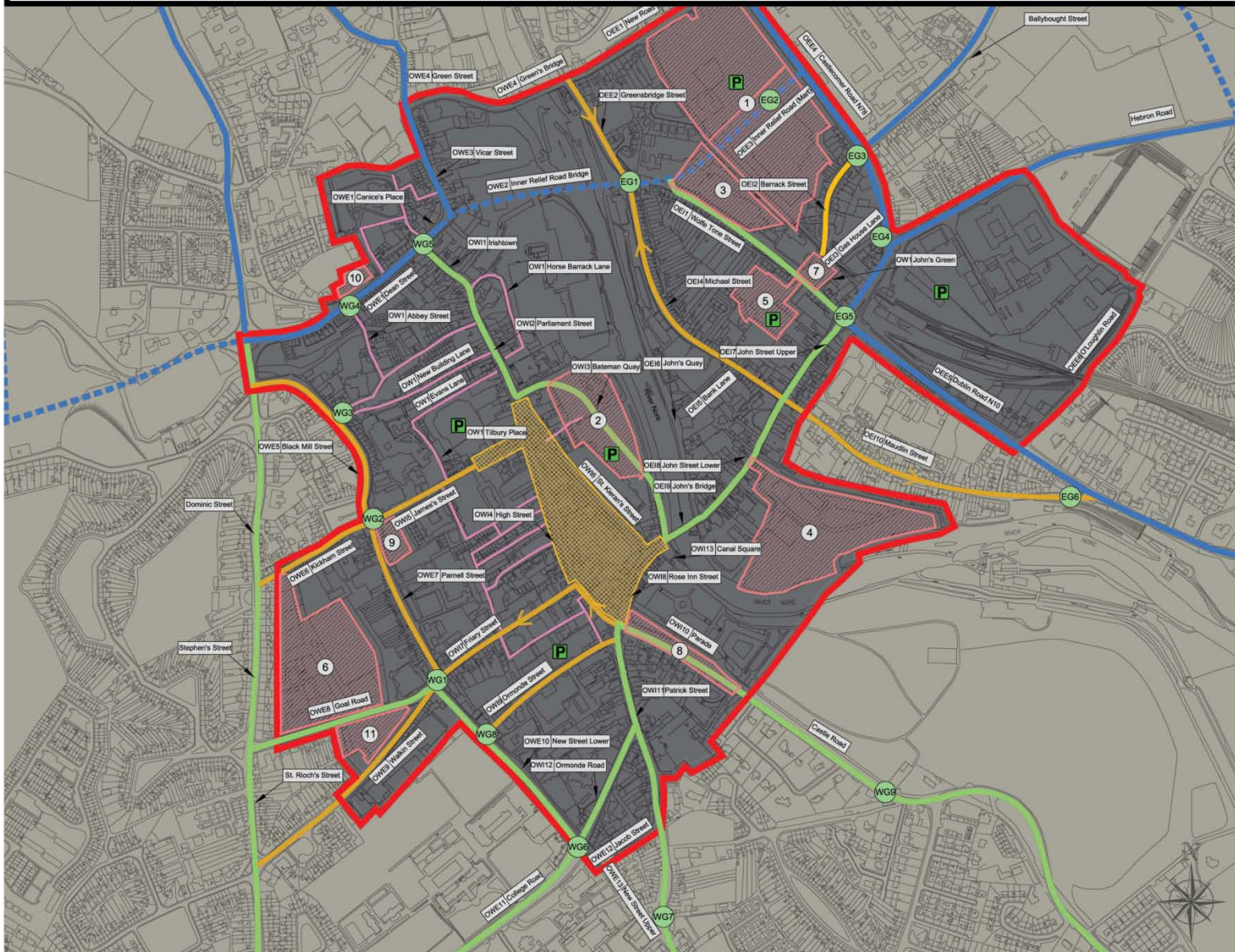
Policy Framework

2005 Kilkenny City Centre Local Area Plan

- Roads objective to '*connect St. Canice's Place to Wolfe Tone Street and Castlecomer Road.*'
- **Map 6**
- Actions further to the 2004 Variation and 2005 Kilkenny City Centre Plan
 - 2006 Malone O'Regan Scott Wilson appointed to provide consultancy services
 - 2007 General Public Consultations and Information sessions
 - 2007 Specific consultations with Michael Street and Wolfe Tone Street Residents

Map No. 6 (2005) Kilkenny City Centre Local Area Plan

- LEGEND**
- Local Area Plan Boundary
 - Existing Distributor Network
 - - - Future Distributor Road Network
 - Primary Street Network
 - Secondary Street Network
 - Lanesway Network
 - Specific Sites
 - Pedestrianised Area
 - P City Centre Gateways
 - P Multi-Storey Car Park
 - OWE Transport Objective



- ① The Mart
- ② Bateman Quay
- ③ Padmore and Barnes
- ④ County Hall
- ⑤ Wolfe Tone Street Car Park
- ⑥ Fair Green
- ⑦ John's Green
- ⑧ The Parade
- ⑨ St. Mary's Car Park
- ⑩ Dean Street Car Park
- ⑪ The Closh

Map 2.4: Transport Objectives, Gateways and Existing Links. {Not to Scale}

Policy Framework

2008 Kilkenny City & Environs Development Plan

- Policy to *'reserve free from development the line of the proposed Central Access Scheme and to complete the Central Access Scheme within the Plan period.'*
- *Approved by all Members*

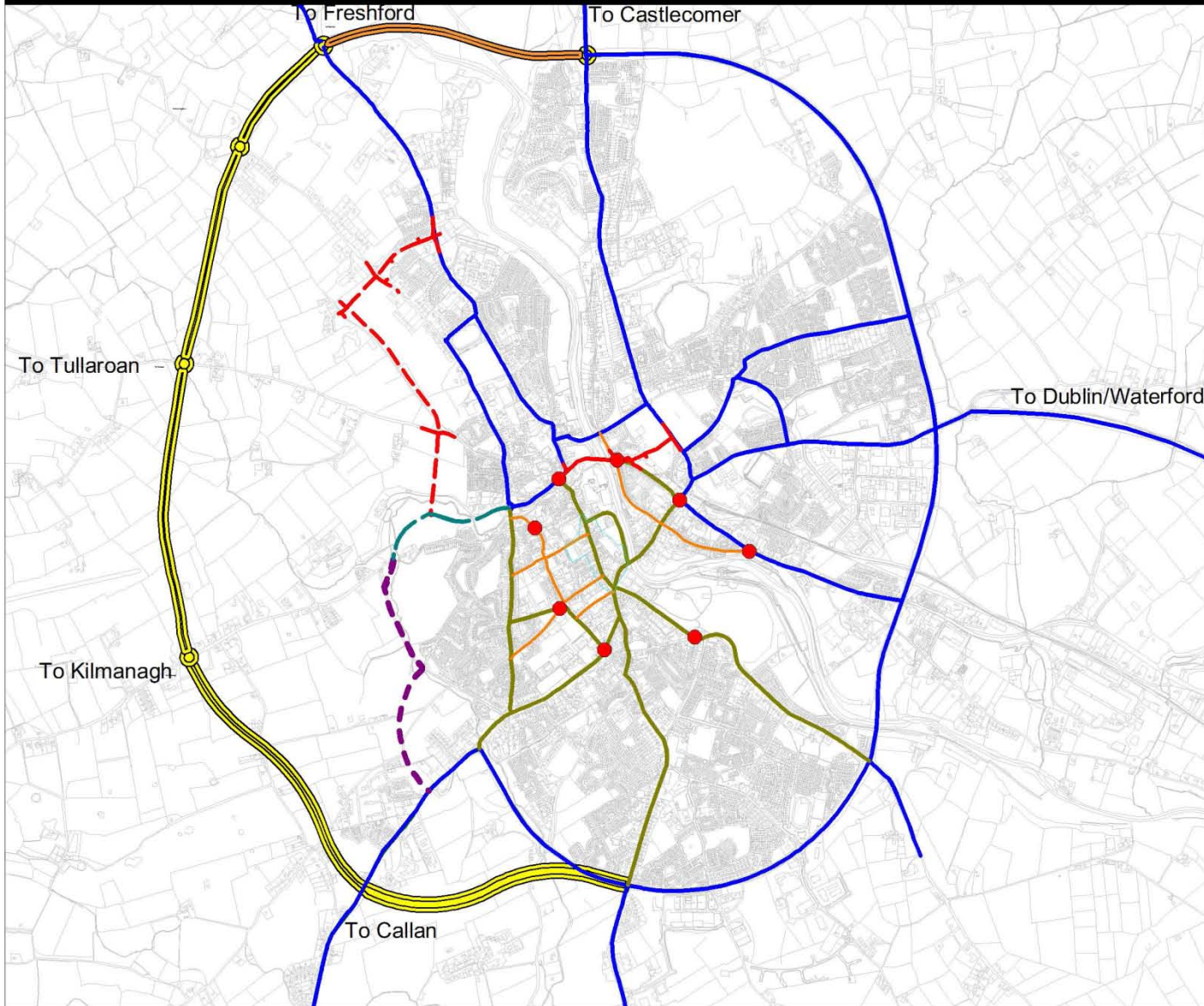
Policy Framework

2014 Kilkenny City & Environs Development Plan

- Objective 10K
 - *‘Reserve the line of Phases 2 and 3 of proposed Central Access Scheme free from development and to complete Phase 1 of the Central Access Scheme within the Plan period.’*
- **Map 7**
- Adopted unanimously by Kilkenny County Council 22nd April, 2014.
- Adopted unanimously by Kilkenny Borough Council on 16th May, 2014.

Map No.7 2014 Kilkenny City & Environs Development Plan

Figure 10.2 Street Hierarchy



- Distributor Road
- Primary Street
- Secondary Street
- Central Access Scheme (Phase 1)
- - - Central Access Scheme (Phase 2)
- - - Central Access Scheme (Phase 3)
- Northern Ring Road extension
- Western bypass
- - - Western Environs Road
- Gateway
- Pedestrian portal
- Core Retail area

Date: June 2014

Scale 1:32,000 @A4

Based on Ordnance Survey
Ireland Map License No.
2013/27/CCMA/
KilkennyCountyCouncil

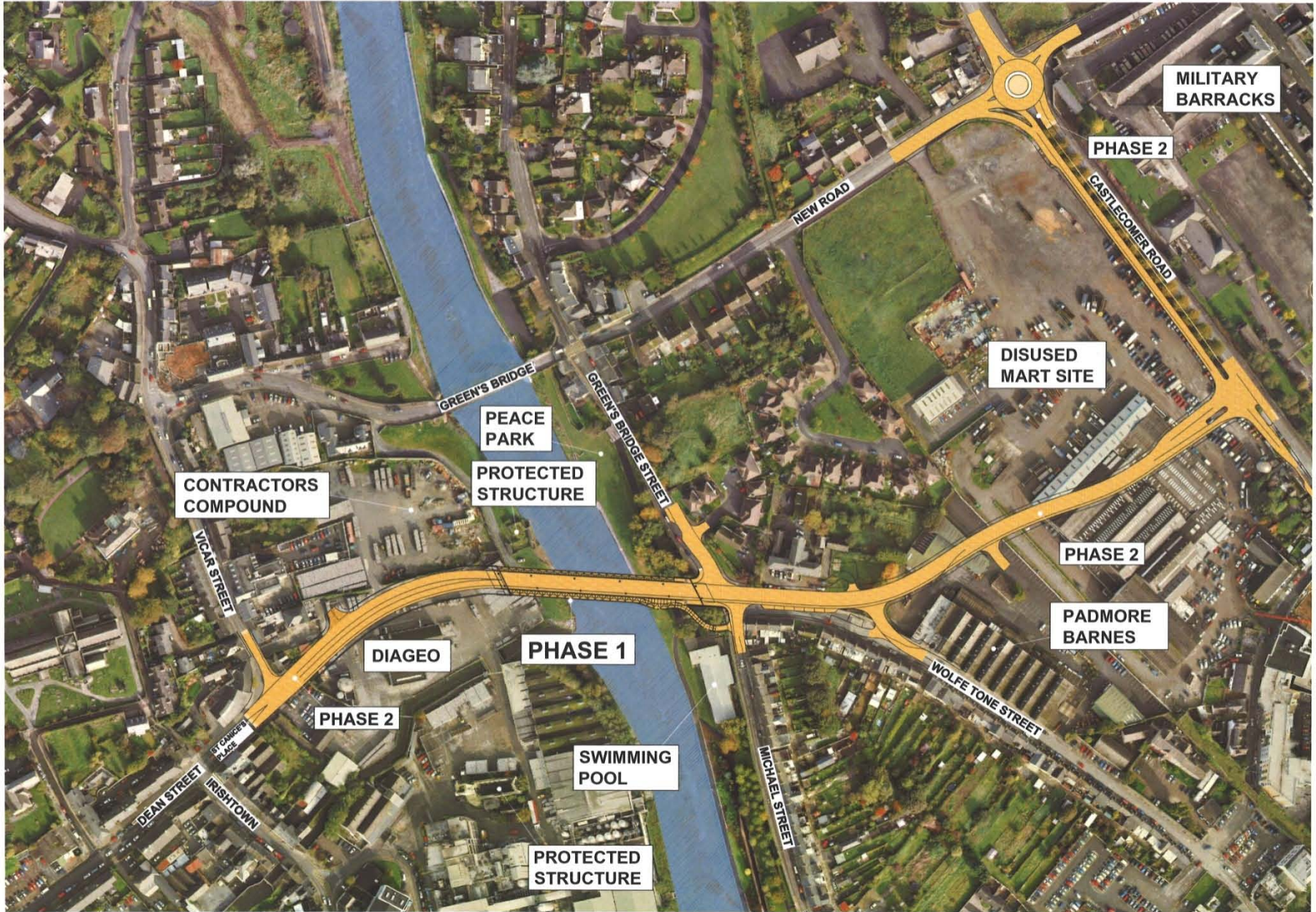
Project Management/Delivery

- Consultants appointed to prepare EIS/CPO in 2006 including;
 - Phase 1 Castlecomer Road to St. Canice's Place
 - Phase 2 Waterbarracks to Circular Road
 - Phase 3 Waterbarracks to Freshford Road
- EIS/CPO submitted to An Bord Pleanála in 2008 and ABP convene Oral Hearing in December 2008
- Direction from ABP in 2009;
 - Provisional approval for Phase 1 subject to re-design
 - Phases 2 and 3 considered to be premature pending Ring Road extension to Freshford Road
- Revised EIS/CPO submitted in 2011 approval for Phase 1 issued by ABP in December 2011 subject to 4 Conditions.

Project Management/Delivery

- 2012 – 2014 Capital Budget Approval for Borough and County Councils
- Project Works post ABP Approval;
 - CPO effected, Statutory Notices served (ongoing)
 - Detailed Design and Tender Documentation prepared (2012/2013)
 - Site Investigation Contract awarded and completed (2012)
 - Archaeological Direction received from Minister and 7 associated licences for archaeological investigations and monitoring (ongoing)
 - Short listing of contractors for Bridge Construction (Nov 2013)
 - Invitations to Tender (February 2014)
 - Letter of Intent (April 2014)
 - Letter of Acceptance (Binding Contract) 10/06/2014 (€4.18 million ex VAT)
 - Works commenced on site 30th June, 2014

Scheme/Bridge Details



MILITARY BARRACKS

PHASE 2

CASTLECOMER ROAD

DISUSED MART SITE

PHASE 2

PADMORE BARNES

PHASE 1

DIAGEO

CONTRACTORS COMPOUND

PEACE PARK

PROTECTED STRUCTURE

SWIMMING POOL

GREEN'S BRIDGE

NEW ROAD

WOLFE TONE STREET

MICHAEL STREET

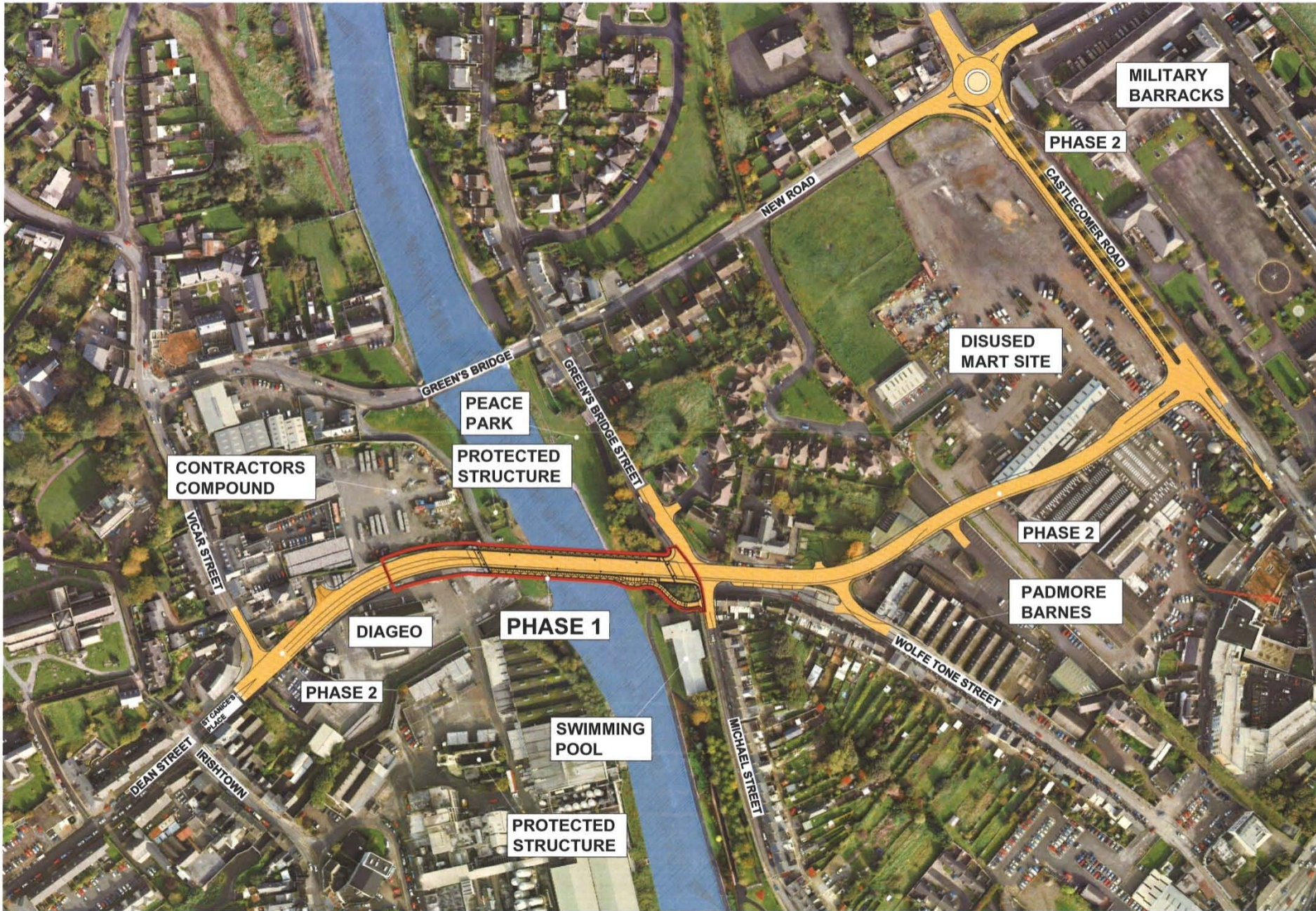
DEAN STREET

IRISHTOWN

VICAR STREET

PROTECTED STRUCTURE

GREEN'S BRIDGE STREET



MILITARY BARRACKS

PHASE 2

DISUSED MART SITE

PHASE 2

PADMORE BARNES

PEACE PARK

PROTECTED STRUCTURE

PHASE 1

DIAGEO

PHASE 2

SWIMMING POOL

PROTECTED STRUCTURE

CONTRACTORS COMPOUND

GREEN'S BRIDGE

GREEN'S BRIDGE STREET

NEW ROAD

CASTLECOMER ROAD

WOLFE TONE STREET

MICHAEL STREET

DEAN STREET

IRISHTOWN

VICAR STREET

ST DANES PLACE

Original Bridge Design Proposals – Not Approved



Bridge Options – Cable Stayed Variation – Inclined Tower (Not Approved)

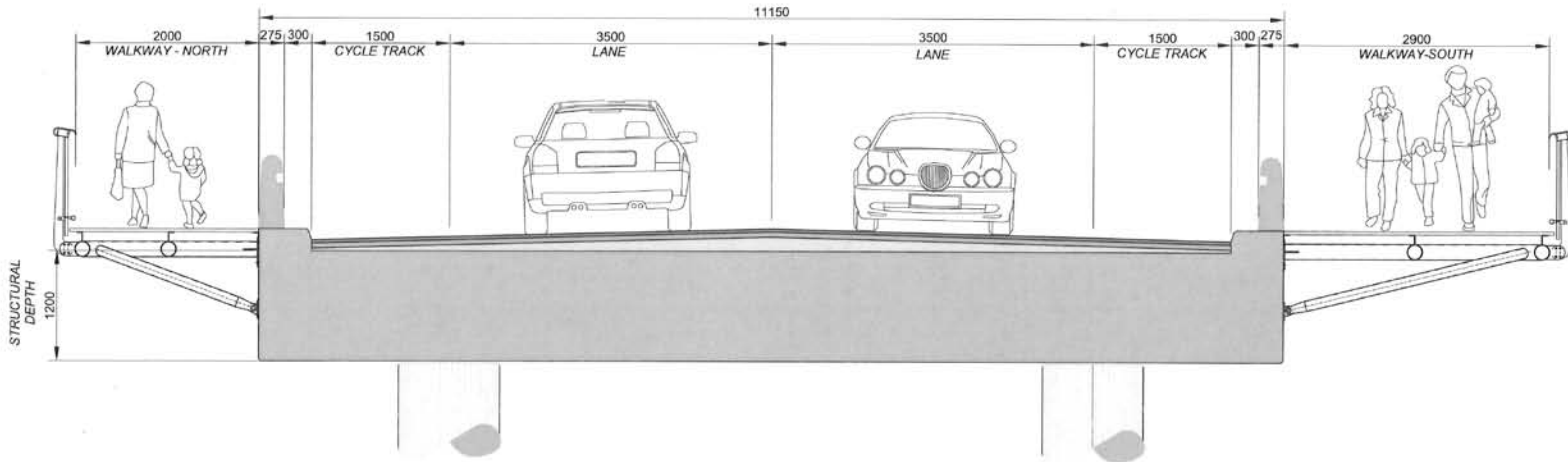


Bridge Options – Cable Stayed Variation – Vertical Tower (Not Approved)

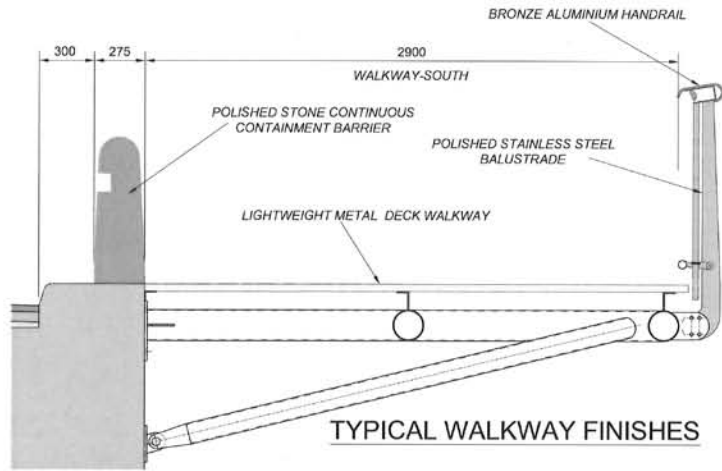




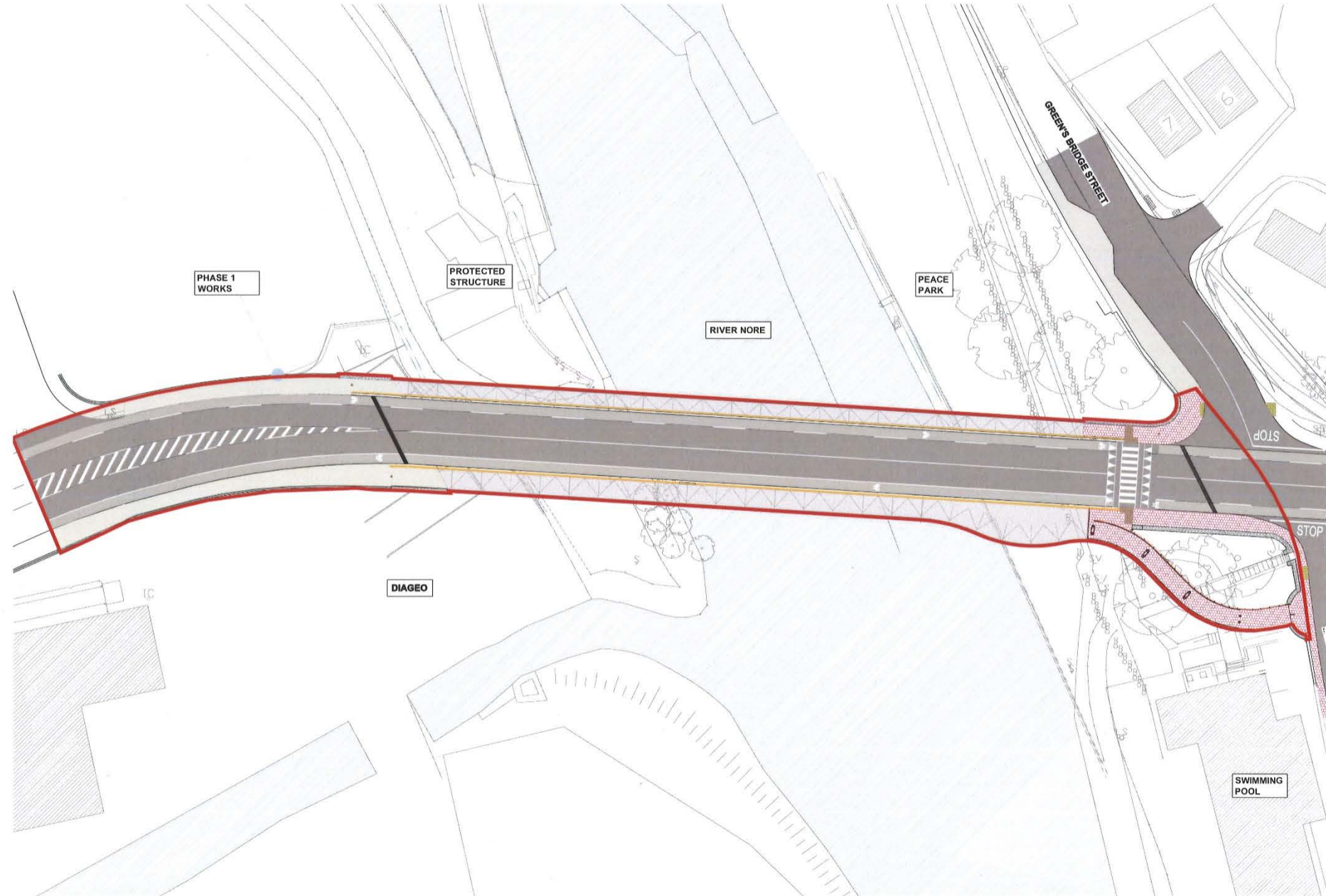




TYPICAL SECTION THROUGH BRIDGE



TYPICAL WALKWAY FINISHES



PLAN OF KCAS BRIDGE







STAINLESS STEEL BALUSTRADE WITH A BRONZE ALUMINIUM HANDRAIL





View 5B from Peace Park at Night



