



2024



Kilkenny County Council GRANTS BOOKLET

Kilkenny County Council GRANTS BOOKLET

| | |
|--|----|
| <i>Introduction</i> | 5 |
| <i>Amenity Grants</i> | 8 |
| <i>Anti-Litter & Anti-Graffiti Community Grant</i> | 10 |
| <i>Arts Act Grants</i> | 20 |
| <i>Built Heritage Investment Scheme 2024</i> | 22 |
| <i>CLÁR Programme</i> | 24 |
| <i>Climate Action Grants</i> | 26 |
| <i>Community & Cultural Facilities Capital Scheme</i> | 32 |
| <i>Commercial Premises Paint Scheme</i> | 38 |
| <i>Community Involvement in Roadworks</i> | 40 |
| <i>Community Heritage Grants 2024</i> | 42 |
| <i>Community Events Grant Scheme</i> | 44 |
| <i>Community Monuments Fund 2024</i> | 46 |
| <i>Community Water Development Fund</i> | 48 |
| <i>Creative Ireland & Cruinniú na nÓg Grant Scheme 2024</i> | 50 |
| <i>Estate Management Grant</i> | 52 |
| <i>Festival Grants Scheme</i> | 54 |
| <i>Graveyard Grant Scheme</i> | 56 |
| <i>Historic Structures Fund 2024</i> | 58 |
| <i>Housing Grants</i> | 60 |
| <i>The Heritage in Schools Programme</i> | 62 |
| <i>Kilkenny Recreation and Sports Partnership</i> | 64 |
| <i>Local Enhancement Programme 2024</i> | 66 |
| <i>Local Enterprise Office</i> | 68 |
| <i>Local Improvement Schemes (LIS)</i> | 70 |
| <i>Outdoor Recreation Infrastructure Scheme</i> | 72 |
| <i>Small Business Vacant Premises Incentive Scheme</i> | 74 |
| <i>Town & Village Renewal</i> | 76 |
| <i>Tyrone Guthrie Residency Bursary</i> | 78 |
| <i>Vacant Property Refurbishment Grant (Croí Cónaithe Towns Fund)</i> | 80 |

HELP US HELP THE POLLINATORS

Leading the way in pollinator protection, Kilkenny County Council became Ireland's first local authority to officially partner with the All-Ireland Pollinator Plan.

Kilkenny County Council's Heritage Office has a selection of Pollinator Friendly advice leaflets for the Garden, Local Communities, Faith Communities and Farmland communities.

To find out what you can do to help our pollinators and get a free copy of whichever leaflet suits your purpose please email the Heritage Office at heritage@kilkennycoco.ie

VISIT:
[kilkennyheritage.ie/
natural-heritage/pollinators/](http://kilkennyheritage.ie/natural-heritage/pollinators/)



Kilkenny Going Green

If you are applying for grants please consider including actions which support pollinators, where appropriate.

For more info visit

WWW.POLLINATORS.IE



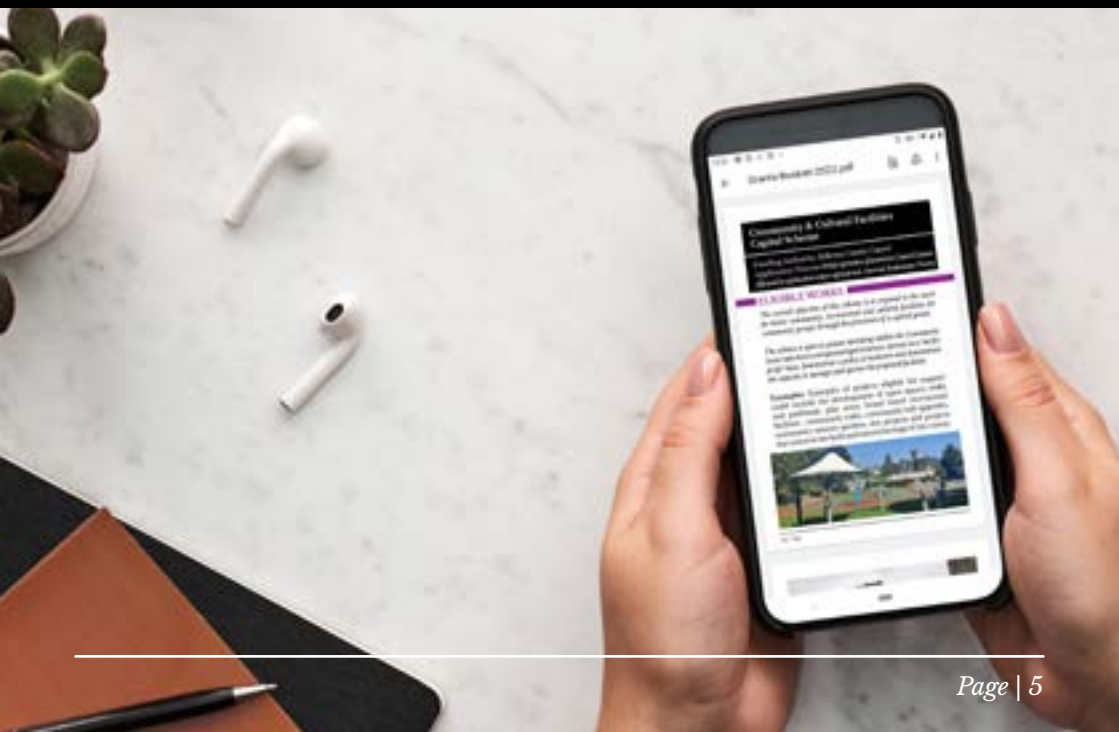
INTRODUCTION

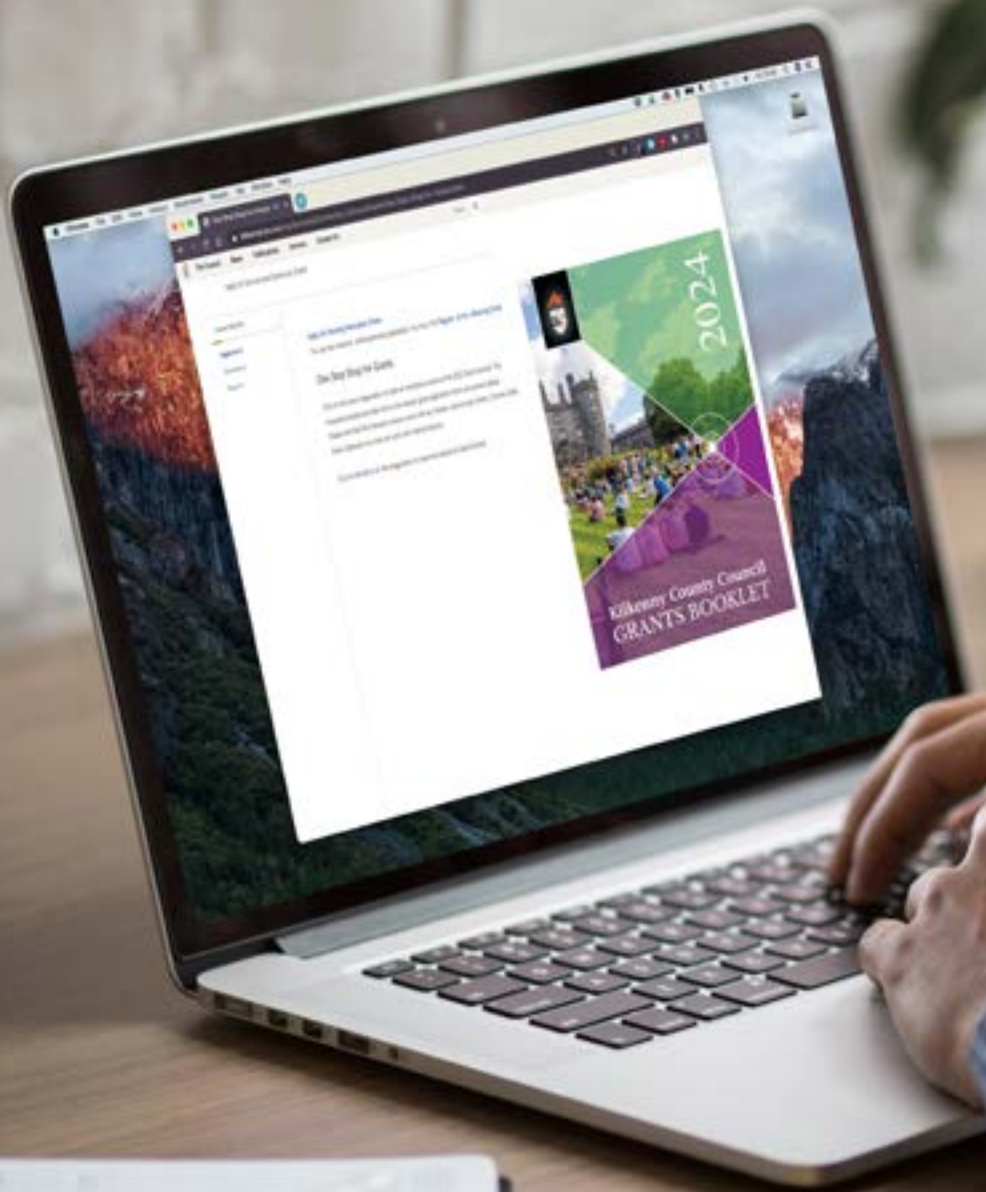
This grant booklet summarises the key elements of Kilkenny County Council and other National Community Grants. It informs community groups of funding streams available to carry out and complete various types of community activities and projects in their neighbourhoods.

In order to improve how we communicate grant information and availability we have also developed an online one stop shop which can be accessed at:



www.kilkennycoco.ie/eng/Services/Community_Culture/Grants/One-Stop-Shop-for-Grants.html







Amenity Grants

Funding Authority: *Kilkenny County Council*

Application Process: *Internal Assessment*

ELIGIBLE WORKS

The scheme is intended to improve outdoor community facilities for the protection or improvement/enhancement of natural or man-made amenities. e.g. grass cutting, purchase of small gardening equipment/tools, tree & flower planting.

Works that will qualify include:

- Improvements to or maintenance of, parks and open spaces, green areas in residential areas and other public open areas
- Works for the conservation or protection of natural or man-made amenities, -scenic walks, nature trails, planting of trees, shrubs etc.

(This scheme will only cover public amenity areas where access is available free of charge, it will not cover clubs where a membership fee applies).

Examples: General upkeep and maintenance of amenity areas and grass cutting in housing estates.



| | | | |
|-----------------------|---|--|-----------------|
| Target Group: | | Local Community Groups, Resident Groups, Tidy Towns Groups | |
| Budget: | €140,000 | Closing Date: | 29th March 2024 |
| Match Funding: | None | | |
| Contact: | Parks Department Tel: 056-7794441 Email: lisa.bourke@kilkennycoco.ie | | |

Anti-Litter and Anti-Graffiti Community Grant

Funding Authority: *Kilkenny County Council*
Application Process: *Internal Assessment & Decision*

ELIGIBLE WORKS

Projects that support community groups/organisations to combat litter and graffiti issues in their local community.

Projects eligible for funding include:

- Community clean ups on public lands
- Community art projects to combat/deter graffiti
- Environmental awareness litter themed workshops.



LET'S TEAM UP TO CLEAN UP!

Together for Kilkenny

| | | | |
|-----------------------|---|----------------------|---------------|
| Target Group: | Local Community Groups, Youth Groups | | |
| Budget: | €10,000 (Range €150- €1500) | Closing Date: | 10th May 2024 |
| Match Funding: | None | | |
| Contact: | Margaret Whelan Environment Section, Kilkenny County Council Tel: 056-7794027 Email: Margaret.whelan@kilkennycoco.ie | | |



Zero Waste



general

| | | |
|--|--|---|
|  Non-compostable disposable cups |  Wet wipes |  Soiled aluminium foil & containers |
|  Broken crockery | no food no recyclables no batteries |  Floor sweepings |
|  Contaminated items |  Disposable face masks |  Disposable gloves |



recycle

| | | |
|---|---|--|
|  Plastic bottles & containers |  Plastic tubs & trays |  Soft plastics |
|  Cans & tins | clean, dry & loose & no batteries |  Aluminium cans |
|  Cardboard |  Cartons |  Paper & magazines |



food

| | | |
|--|---|---|
|  Raw food |  Cooked food |  Unwanted leftovers |
|  Paper towels & napkins | no glass no plastics no batteries no metals |  Tea bags & coffee grinds |
|  Compostable bags <small>Certified to EN13432</small> |  Compostable packaging <small>Certified to EN13432</small> |  Greenery & flowers |

GO 
ZERO
WASTE

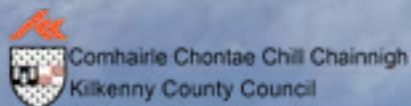


Kilkenny Going Green



The Vision

“Kilkenny County Council will be a climate resilient organisation that inspires and supports the county’s transition to a biodiversity rich, sustainable and climate neutral economy by 2050.”



How can you help meet Climate Action targets?



In order to meet climate action targets, we need everyone in County Kilkenny to play an active role. Many people want to help, but don't know what to do or where to start. Below are some suggestions for actions we can all take which will help to reduce our carbon footprints at home, work, and within the local community.

Did you know that hedges are really important in tackling climate change? They store carbon, slow down flash-floods and provide a home for nature. If you're trimming your hedges, make sure to do it before the end of February when the birds begin to build their nests and lay eggs.



At around 40%, transport is the largest energy user in Ireland. Believe it or not, private cars account for about one fifth of all our energy use.



No Mow May



Taking part couldn't be easier, just lock away the lawnmower for the month of May and wait and see what grows. You might be surprised by what appears over a few short weeks. You might see plants like Dandelions, Red and White Clover and birds-foot trefoil, all of which are excellent sources of food for pollinating insects, as well as bees, butterflies, and birds, all attracted by the feast on your lawn!

Reduce, Reuse, Recycle



Producing clothes uses a lot of natural resources and creates greenhouse gas emissions which are responsible for climate change. 8-10% of the global Greenhouse Gas Emissions are produced by the clothing and textile industry. Buy less, buy good, shop from second hand stores where possible. You can also repair your clothes, buy natural fabrics instead of synthetic fibres and think before you buy.



Turn the thermostat down to 19°C in your living and working areas. The temperature in hallways and bedrooms should be cooler, ideally between 15-18°C. You can reduce your heating bill up to 10% by lowering your room temperature by just one degree.



Support nature by planting native trees, hedges and pollinator-friendly plants in your garden or community. Healthy habitats will absorb carbon and provide green solutions to the climate crisis. Avoid using pesticides where possible.

How can you help meet Climate Action targets?



In order to meet climate action targets, we need everyone in County Kilkenny to play an active role. Many people want to help, but don't know what to do or where to start. Below are some suggestions for actions we can all take which will help to reduce our carbon footprints at home, work, and within the local community.

The number one thing you can do to reduce your transport emissions is to walk or cycle where possible, or use public transport. The most energy efficient journey is the one you do not make in the car.



If you need to drive, then driving style can also impact on energy use.

Did you know that driving just 10kph slower can save you up to 18% in fuel.

Turning off all non-essential equipment out of business hours can save up to 60% of office equipment energy costs.



Use the eco setting on all appliances.

By using the power-saving mode on a photocopier can save up to 92% of its typical energy use

When purchasing new equipment check the energy efficiency rating label. Equipment rated A will use less energy and cost less to run.

Switch to LED bulbs and fittings, as they use considerably less energy while supplying the same level of light.



Heat it when you need it, use timers or smart heating controls to fit your routines.

Did you know that the biggest energy users in your home are the shower, cooker, tumble dryer, washing machine and kettle, use them sensibly.

Use an energy monitor to find out how much energy you are using in real time.

Arts Act Grants

Funding Authority: *Kilkenny County Council*
Application Process: *Independent panel appointed
by Arts Officer*

ELIGIBLE WORKS

The Arts Act Grant is for organisations or individuals based in the Kilkenny administrative area involved in activities, which promote, develop the knowledge, appreciation and practice of the arts for the Arts Act Grant.

The following are eligible to apply:

- 1. Groups and Organisations promoting arts**
- 2. Individual Artists**

Kilkenny County Council will consider applications from practising artists living in Kilkenny to enable them to pursue their practice and to develop within their chosen discipline, including professional development and project awards.



| | | | |
|-----------------------|---|-----------------------------------|----------------------|
| Target Group: | Arts Act Grants-Organisations/ Community Groups for the purpose of stimulating public interest in Arts & Individuals to enable them to pursue their practices. | | |
| Budget: | €25,000 (Avg €200-€1000) | Closing Date: | 22nd January 2024 |
| Match Funding: | Match funding requirement (for beneficiary) is minimum 20% | | |
| Contact: | Diane Seale, Kilkenny County Council Arts Office Tel: 056-7794289 Email: diane.seale@kilkennycoco.ie | | |

Built Heritage Investment Scheme 2024

Funding Authority: *Kilkenny County Council*

Application Process: *Internal Assessment & Decision*

ELIGIBLE WORKS

The aim of the Built Heritage Investment Scheme is to invest in a significant number of small-scale, labour intensive conservation projects throughout the county and to support the employment of conservation professionals, crafts people and trades persons in the repair of the historic built environment.

Each Local authority is allocated a fixed amount from the overall national fund of €4m as determined by the Department of Housing, Local Government and Heritage, and will support the works to protected structures, Proposed Protected Structures, and Structures in Architectural Conservation Areas (ACAs), or within the amenity of a National Monument, where exceptional circumstances are deemed by the Department to apply.





| | | | |
|------------------------------|---|-----------------------------|--------------------------|
| <p>Target Group:</p> | <p>Small-scale, labour-intensive conservation projects throughout the county and to support the employment of conservation professionals, crafts people and trades persons in the repair of the historic built environment.</p> | | |
| <p>Budget:</p> | <p>€4,500,000 Nationally Kilkenny €156,800</p> | <p>Closing Date:</p> | <p>19th January 2024</p> |
| <p>Match Funding:</p> | <p>50% match funding</p> | | |
| <p>Contact:</p> | <p>Kilkenny County Council, Architectural Conservation Officer Tel: 056-7794010 Email: planning @kilkennycoco.ie</p> | | |

CLÁR Programme

Funding Authority: *Department of Rural and
Community Development*

Application Process: *Applications to Kilkenny County
Council for Measure 1. Decisions are made by the Department
of Rural & Community Development.*

ELIGIBLE WORKS

The CLÁR scheme is a targeted investment programme towards identified CLÁR areas in County Kilkenny. The aim of CLÁR is to support the sustainable development of identified CLÁR areas with the aim of attracting people to live and work there.

Examples: Support for Community Safety Measures, Play Areas (including Multi Use Games Area), Community Walkways and Sporting Facilities.



| | | | |
|-----------------------|--|----------------------|---------------|
| Target Group: | The target group is Community Groups, Community Facilities and Sporting Organisations in identified CLÁR areas in County Kilkenny. | | |
| Budget: | To be advised | Closing Date: | To be advised |
| Match Funding: | Approximately 10% | | |
| Contact: | Kilkenny County Council Community Development Tel: 056-7794920 Email: community@kilkennycoco.ie | | |

www.kilkennycoco.ie/eng/Services/Community_Culture/Community-Cultural-Facilities-Capital-Scheme-CCFCS-/

Community Climate Action Programme

Funding Authority: *Department of Environment,
Climate & Communications*

Application Process: *Submission to Department for
Approval*

ELIGIBLE WORKS

The overall objective of this Programme is to support and empower communities, to shape and build low carbon, sustainable communities in a coherent way to contribute to national climate and energy targets.

1. **Strand 1: Building Low Carbon Communities.** Under this scheme communities will apply to carry out projects that have a direct climate action impact. A number of projects will be selected from the city and county of Kilkenny.
2. **Strand 1A, Shared Island Community Climate Action:** This strand enables communities and local authorities to carry out a cross border project in partnership with a community in Northern Ireland.

Unlike Strand 1, Local Authorities have not been allocated funding under Strand 1A. Kilkenny communities may apply to this all Ireland fund and their project must have a clear North/South basis, with a cross-border partnership approach and impact.

Examples: There are grants available under categories Energy, Travel, Food & Waste, Shopping & Recycling, Local Climate & Environmental Action.

| | | | |
|-----------------------|---|---|--------------------|
| Target Group: | | The target group is Kilkenny Community Groups. There are two strands of funding. | |
| Budget: | Strand 1 €511,000 Strand 1A All Island €3,000,000 | Closing Date: | Noon 28th Feb 2024 |
| Match Funding: | | None | |
| Contact: | | Breda Maher, Kilkenny County Council, Community Climate Action Officer Tel: 056-7794128 Email: breda.maher@kilkennycoco.ie | |



Other Climate Action Grants

CLIMATE ACTION GRANTS

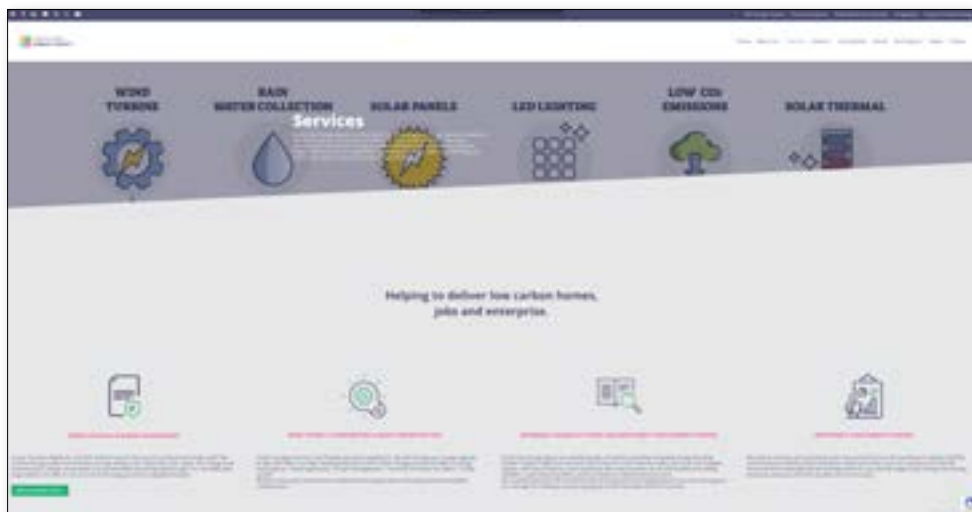
There are various grants available to help communities, individuals, businesses, artists, and sports clubs to take positive action on climate sustainable projects. These grants are available through South East Energy Agency Grant and Green Clubs GAA. Please note that new grants are announced regularly and existing grants updated, so please contact the relevant grant giving organisation to confirm the most up-to-date details.



South East Energy Agency Grant Advice

The South East Energy Agency (SEEA), based in Kilkenny, is a “One Stop Shop” for the South East Region whose team of energy experts provide advice on grants, and reducing energy in your home, community or business. They act as an intermediary for a range of sectors including domestic houses, business, communities, public sector, agriculture, transport.

The SEEA doesn't administer grants but is a useful first port of call for information on grants. See <https://southeastenergy.ie/services/>



Sustainable Energy Authority of Ireland Grants

The Sustainable Energy Authority of Ireland (SEAI) grants are available to help homeowners, business owners, communities and large industry to reduce their energy costs and greenhouse emissions.

Homes

There are now more ways than ever to make your home warmer and more energy efficient. SEAI grants include (i) complete home energy upgrade, (ii) individual grants, and (iii) fully funded energy upgrades for homeowners in receipt of certain benefits. For more information see <https://www.seai.ie/grants/home-energy-grants/>

Electric Vehicles

SEAI electric vehicle grants make it more affordable to switch to an Electric Vehicle (either private or commercial vehicle). They have grants for (i) EV's, and (ii) EV Charging Points (home, public, apartment). <https://www.seai.ie/grants/electric-vehicle-grants/>

Communities

The SEAI Community Grant supports energy efficiency community projects through capital funding, partnerships, and technical support. This includes grants for Building Fabric Upgrades; Technology and System upgrades; Integration of Control Systems; Integration of renewable energy sources; Domestic Combined Fabric Upgrade; Single Building Demonstration projects <https://www.seai.ie/grants/community-grants/overview/>

Start a Sustainable Energy Community

Start an energy community and work together to achieve a sustainable energy goal/plan. Sustainable Energy Communities can avail of a free mentor service and grant funding to help achieve community energy goals

<https://www.seai.ie/community-energy/sustainable-energy-communities/>

Renewable Electricity Support Scheme

The Renewable Electricity Support Scheme (RESS) promotes investment in renewable energy generation in Ireland.

<https://www.seai.ie/community-energy/ress/overview/>

Business Grants & Supports

Do you want to cut down on energy costs or meet energy saving targets? The SEAI business grants can help make significant savings. <https://www.seai.ie/business-and-public-sector/business-grants-and-supports/>

Community & Cultural Facilities Capital Scheme

Funding Authority: *Kilkenny County Council*
Application Process: *Verbal expression of interest to Council Official followed by application where appropriate. Internal Evaluation Process.*

ELIGIBLE WORKS

The overall objective of this scheme is to respond to the need for better community, recreational and cultural facilities for community groups through the provision of a capital grant.

The scheme is open to groups operating within the Community Sector who have a recognised legal structure, operate on a 'not for profit' basis, demonstrate a policy of inclusion and demonstrate the capacity to deliver the project and thereafter to manage and operate the proposed facilities.

Examples: Examples of projects eligible for support include the development of open spaces, walkways and parklands, play areas, broad based recreational facilities , community radio, community hall upgrades, community sensory gardens, arts projects and projects that conserve the built and natural heritage of the county.



| | | | |
|-----------------------|--|----------------------|-----|
| Target Group: | Local Development Groups | | |
| Budget: | €250,000 | Closing Date: | TBC |
| Match Funding: | 75% of costs (€9,000 min – max of €45,000). The grant beneficiary will have to provide the remaining 25% match funding. | | |
| Contact: | Kilkenny County Council Community Development Tel: 056-7794920 Email: community@kilkennycoco.ie | | |



- ENERGY • WATER • WASTE
- BIODIVERSITY • TRANSPORT

GAA Green Clubs Programme

The GAA Green Clubs programme supports GAA clubs to take simple and effective sustainability action in their grounds and activities. Closing date is Sunday January 29th. These clubs will be eligible for seed funding and support to implement sustainability action

<https://greenclubs.gaa.ie/>

The free GAA Green Club Programme Toolkit is available to all GAA clubs. It contains practical advice and guidance on Energy, Water, Waste, Biodiversity and Travel & Transport, tailored for GAA clubs, as well as inspiring case studies from clubs from across the island of Ireland.

<https://learning.gaa.ie/greenclub>





Our Targets

As part of Climate Action Plan, we are working towards a 51% reduction in greenhouse gas emissions and a 50% improvement in energy efficiency.



Comhairle Chontae Chill Chainnigh
Kilkenny County Council





Kilkenny Going Green

Commercial Premises Paint Scheme

Funding Authority: *Kilkenny County Council*
Application Process: *Application Forms,
Internal Assessment & Decision*

ELIGIBLE WORKS

Assist with the cost of painting the front façade of buildings and traditional signage throughout the county.





| | | | |
|-----------------------|--|----------------------|--------------|
| Target Group: | Commercial Premises street facing facade. | | |
| Budget: | €10,000 | Closing Date: | 3rd May 2024 |
| Match Funding: | 50% cost of works or max grant €450 | | |
| Contact: | Kilkenny County Council Community Development Tel: 056-7794920 Email: community@kilkennycoco.ie | | |

https://www.kilkennycoco.ie/eng/Services/Community_Culture/Grants/Streetscape-Paint-Scheme.html

Community Involvement in Roadworks Scheme

Funding Authority: Kilkenny County Council

*Application Process: Application Form, Internal Evaluation
& Submission to the Department Transport Tourism and Sport.*

ELIGIBLE WORKS

The Community Involvement Scheme (CIS) is an opportunity for communities to have road repair work carried out at relatively modest cost on local roads and cul-de-sacs that be included on the Council's main roadworks programme. Local communities or individuals can identify qualifying improvement works on their local public roads. Subject to a community financial contribution of 15% of the cost of the works, the balance of the cost of the works may be funded by a specific grant from the Department of Transport.





| | | | |
|-----------------------|--|----------------------|---------|
| Target Group: | Private Residents and Land Owners | | |
| Budget: | | Closing Date: | Ongoing |
| Match Funding: | 15%-30% (certain criteria applies) | | |
| Contact: | <p>Municipal District Castlecomer Castlecomer Area Office. Tel: 056-7794450</p> <p>Municipal District Kilkenny City, City Hall. Tel: 056- 7794516</p> <p>Municipal District Callan/Thomastown Callan Area Office Tel: 056-7794320</p> <p>Thomastown Area Office Tel: 056-7794340</p> <p>Municipal District Piltown, Ferrybank Area Office. Tel: 056-7794270</p> | | |

Community Heritage Grant 2024

Funding Authority: *Heritage Council*

Application Process: *Contact the Heritage Council*

ELIGIBLE WORKS

Details of this grant scheme are available on the Heritage Council website www.heritagecouncil.ie





| | | | |
|----------------------|---|----------------------|---|
| Target Group: | Community Groups and Not for Profit Organisations | | |
| Budget: | TBC | Closing Date: | For updates visit: www.heritagecouncil.ie |
| Contact: | The Heritage Council, Kilkenny Email. aryan@heritagecouncil.ie | | |

Community Events Grant Scheme

Funding Authority: *Kilkenny County Council*
Application Process: *Application Form,
Internal Evaluation*

ELIGIBLE WORKS

The main purpose of the Community Events Grants scheme is to provide financial assistance to community event organisers with the development, promotion and the running of small-scale community events organised by local not-for-profit voluntary groups and organisations and includes intercultural events and events that recognise and celebrate diversity, in Kilkenny 2024.



| | | | |
|-----------------------|---|----------------------|-----|
| Target Group: | Community Events | | |
| Budget: | €30,000 | Closing Date: | TBC |
| Match Funding: | NA | | |
| Contact: | <p>Completed applications, together with supporting documentation, must be submitted by post or email to:</p> <p>Ashling Slattery, Community and Culture Department, Kilkenny County Council, Patricks Court, Patricks Street, Kilkenny, R95 N28F</p> <p>Tel: 056-7794920</p> <p>Email: ashling.slattery@kilkennycoco.ie</p> | | |

Community Monuments Fund 2024

ELIGIBLE WORKS

This grant scheme is for the conservation, maintenance, protection and promotion of archaeological monuments. It recognises the need to build resilience in our monuments to enable them to withstand the effects of climate change. Funding is available in three streams.

Stream 1: *Essential repairs and capital works for the conservation and repair of archaeological monuments*

Stream 2: *Development of Conservation Management Plans/Reports that are aimed at identifying measures for conservation of archaeological monuments and improving public access.*

Stream 3: *Grants of up to €30,000 for the enhancement of infrastructure, interpretation projects (including virtual/online), and small scale emergency conservation works at archaeological monuments.*

The scheme is funded by the Department of Housing, Heritage and Local Government and administered by the Heritage Office of Kilkenny County Council.

Applications by private owners or community groups for funding under the CMF must be made to Kilkenny County Council by 1st February 2024. Application forms and guidance notes are available from the Heritage Office.

Email heritage@kilkennycoco.ie



| | | | |
|-----------------------|---|---|-------------------|
| Target Group: | | Local authorities, private owners, custodians and community groups. | |
| Budget: | Total national budget €6,000,000 | Closing Date: | 1st February 2024 |
| Match Funding: | None | | |
| Contact: | Regina Fitzpatrick Heritage Officer Tel: 056-7794923 Email: heritage@kilkennycoco.ie | | |

<https://kilkennyheritage.ie/2023/12/community-monuments-fund-2024/>

Community Water Development Fund

Funding Authority: *Local Authority Waters Programme*
Application Process: *Contact Local Community Water Officer before submitting application*

ELIGIBLE WORKS

Groups may apply for capital funding for works to include River Restoration Works, Silt Trapping, Pollution Management, Invasive species, Creation of habitat (full list of capital works available on www.watersandcommunities.ie).

Creating Public Awareness through community led surveys, booklets, information session, signage etc.

Enhancing a public area i.e. picnic area, river walk etc.



| | | | |
|---|--|----------------------|---------------|
| Target Group: | This scheme aims to support communities in progressing water based projects and initiatives. Not for profit Community & Voluntary groups, Rural & Urban Networks, Environmental NGO's, Clubs & Associations. | | |
| Budget: | €520,000 | Closing Date: | December 2024 |
| Match Funding: | NA | | |
| Online Platform: | Complete via online lawaters.ie Grant Opening Autumn 2024 | | |
| Contact: | Ann Phelan, Community Water Officer Tel: 085 808 4067 | | |
| Application Form and Guidance Notes in respect of the Community Water Development Fund 2024 are available to download at www.lawaters.ie or by contacting the Waters and Communities Office at 076-1065260 or info@lawaters.ie | | | |

Creative Ireland & Cruinniú na nÓg Grant Scheme 2024

Funding Authority: *Creative Ireland*
Application Process: *Application Form/
Independent assessment panel.*

ELIGIBLE WORKS

This grant scheme aims to provide financial support to local community groups and individuals, artistic and creative practitioners, event organisers and those involved in creative, cultural and heritage activities and projects. This grant encourages cultural participation throughout Kilkenny and support the delivery of the Creative Ireland Kilkenny Culture and Creativity Strategy 2023-2027.

This scheme also includes funding for projects which will help deliver the Cruinniú na nÓg programme in Kilkenny. Cruinniú na nÓg (June 2024) is the national day of free creativity activity for children and young people up to 18 years of age, and is part of the national Creative Ireland Programme.

The scheme is co-funded by the Creative Ireland Programme, and co-ordinated by the Kilkenny County Council Creative Team.



| | | | |
|-----------------------|--|--|--------------------|
| Target Group: | | Local and community groups and individuals, artistic and creative practitioners, event organisers and those involved in creative, cultural and heritage activities and projects. | |
| Budget: | Creative Ireland €40,000 Cruinniú na nÓg €30,000 | Closing Date: | 12th February 2024 |
| Match Funding: | NA | | |
| Contact: | Majella Keating Arts Department Kilkenny County Council Tel: 056-7794338 Email: majella.keating@kilkennycoco.ie | | |

<https://www.creativeireland.gov.ie/en/creative-communities/>

Estate Management Grant

Funding Authority: *Kilkenny County Council*

Application Process: *Internal Assessment*

ELIGIBLE WORKS

Open to community committees in local authority estates to fund projects which promote estate management.

To qualify for assistance under the Estate Management Grant Scheme, applications must be submitted on behalf of an established County Council residents association and proposed projects/activities must be deemed to promote the interests of estate management in the community.

Examples: Equipment purchase & equipment maintenance, clearing of Derelict sites within Estates, Planting, Landscaping, Equipment purchase.





| | | | |
|-----------------------|----------------|--|---------------|
| Target Group: | | Resident & Community Groups in Kilkenny County Council Housing Estates | |
| Budget: | Avg. €600-€700 | Closing Date: | 31st May 2024 |
| Match Funding: | | None | |
| Contact: | | Housing Department Kilkenny County Council Johns Green House, Kilkenny Email: tenancymanagement@kilkennycoco.ie Tel: 056-7794900 | |

Festival Grants Scheme

Funding Authority: *Kilkenny County Council*
Application Process: *Application form. Internal assessment, proposed allocation sent to Corporate Policy Group (CPG). Final proposed allocation sent to Elected Members for approval and adoption.*

ELIGIBLE WORKS

Kilkenny County Council will provide funding for festival organisers to aid with the development and promotion of festivals with a significant tourism impact.

The main purpose of the Festival Support Grants scheme is to support festivals which drive tourism in Kilkenny, underpinning Kilkenny County Council's Tourism strategy and improving the visitor experience in Kilkenny city and county.

Examples: The Kilkenny Cat Laughs Comedy Festival, Kilkenny Roots Festival, Savour Kilkenny Food Festival, Subtitle European Film Festival, Kilkenomics, Kilkenny Animated, Tradfest.





| | | | |
|-----------------------|---------|--|-------------------|
| Target Group: | | Groups hosting festivals | |
| Budget: | €88,000 | Closing Date: | 31st January 2024 |
| Match Funding: | | None | |
| Contact: | | Tourism Dept Kilkenny County Council Tel: 056-7794011 Email: festivalgrants@kilkennycoco.ie | |

Graveyard Grant Scheme

Funding Authority: *Kilkenny County Council*
Application Process: *Application form & Internal Assessment*

ELIGIBLE WORKS

The Graveyard Grant Scheme aims to support community groups/organisations in the maintenance of graveyards and encourage best practice in graveyard management. Any recognised community group/organisation can apply.

Projects eligible for funding in graveyards include:

- Graveyard maintenance, including appropriate works to help pollinators
- Graveyard recording schemes
- Heritage studies of graveyards.





| | | | |
|-----------------------|---|----------------------|----------------|
| Target Group: | Local Community Groups | | |
| Budget: | €24,000 | Closing Date: | 1st March 2024 |
| Match Funding: | None | | |
| Contact: | Kilkenny County Council Environment Section Tel: 056-7794470 Email: environment@kilkennycoco.ie | | |

www.kilkennycoco.ie/eng/Services/Environment/Environment_Grants/

Historic Structures Fund 2024

Funding Authority: The Department of Housing, Local Government and Heritage.

Application Process: Applications sent to Kilkenny County Council for assessment, where select project forwarded to the Department for final decision.

ELIGIBLE WORKS

Funding for the Historic Structures Fund (HSF) is being made available as part of Project Ireland 2040. The primary focus of the Historic Structures Fund will be on conservation and enhancement of historic structures and building for the broader benefit of communities and the public.

Stream 1 will offer grants from €15,000 up to €50,000 and is aimed at essential repairs and smaller capital works for the refurbishment and conservation of heritage structures.

Stream 2 will offer a small number of grants from €50,000 up to €200,000 for larger enhancement, refurbishment or reuse projects involving heritage structures, where:

- 1. A clear community or public benefit has been demonstrated.*
- 2. A clear residential benefit has been demonstrated.*

Vernacular Structures Stream – The purpose of the stream is to support conservation repairs and small capital works to vernacular structure. Such structures may be located within an Architectural Conservation Area.

Historic Shopfronts – *To incentivise the conservation of historic shop fronts, each Local Authority is invited to submit an additional application under Stream 1 for eligible essential repairs and small capital works for the refurbishment and conservation of historic shop facades, windows, signage and other associated details to safeguard them and keep them in use. Funding between €5,000 and €10,000.*



| | | | |
|-----------------------|---|--|-------------------|
| Target Group: | | Small-scale, labour-intensive conservation projects throughout the county and to support the employment of conservation professionals, craftspeople and tradespersons in the repair of the historic built environment. | |
| Budget: | €4,500,000 Nationally | Closing Date: | 19th January 2024 |
| Match Funding: | Varies *Grant allocation may vary annually | | |
| Contact: | Kilkenny County Council, Architectural Conservation Officer Tel: 056-7794010 Email: planning@kilkennycoco.ie | | |

<https://www.kilkennycoco.ie/eng/services/planning/conservation/conservation-grants/>

Housing Grants

Funding Authority: *Kilkenny County Council*

Application Process: *Internal Assessment*

ELIGIBLE WORKS

Housing Adaption Grant for Persons with a Disability

This scheme is available to assist applicants to carry out renovations to accommodate persons with a disability who is a member of the household.

Examples of works: *Level Access Bathroom adaptations, adaptations to facilitate wheelchair access, ramps, curved stairlifts.*

Mobility Aid Grant

This scheme is available to cover small scale works to address mobility issues.

Examples of works: *Grab rails, access ramps, stairlifts.*

Housing Aid for Elderly

This scheme is available to assist older people (66 years and over) living in their own homes to carry out necessary improvement works.

Examples of works: *Repair or replacement of roof, upgrade of electrical works, provision of central heating, replacement of single glazed windows and doors.*



| | | | |
|------------------------------|--|-----------------------------|-------------|
| <p>Target Group:</p> | <p>Housing Adaptation Grants are available to private homeowners and local authority tenants. Mobility Grants are available to private homeowners. Housing Aid Grants are available to private homeowners.</p> | | |
| <p>Budget:</p> | <p>€1,900,000</p> | <p>Closing Date:</p> | <p>None</p> |
| <p>Match Funding:</p> | <p>Income assessed Private home owners</p> | | |
| <p>Contact:</p> | <p>Housing Grants Dept Kilkenny County Council Tel: 056-7794930 Email: Privatehousinggrants@kilkennycoco.ie</p> | | |

The Heritage In Schools Programme

Funding Authority: *Heritage Council*

Application Process: *Contact the Heritage Council*

ELIGIBLE WORKS

The Heritage in Schools programme provides a panel of Heritage Specialists who visit primary schools to teach children about their local heritage – from biodiversity to history and folklore.

Visits are hands-on and interactive and take place in the outdoor classroom where possible. The Specialist will tailor the visit to your requirements. A full or half day visit can be arranged so that the Specialist works with different groups of children throughout the visit. Group sizes are limited to 30 children.

A fantastic scheme for schools who would like their pupils to learn about heritage in a fun and engaging way, whilst addressing the national curriculum requirements. The programme is co-ordinated by the Heritage Council.

| | | | |
|-----------------------|--|----------------------|--|
| Target Group: | Primary Schools. The scheme supports the Social, Scientific and Environmental Education (SESE) curriculum. | | |
| Budget: | TBC | Closing Date: | |
| Match Funding: | Required –See here <i>www.heritageinschools.ie/about/how-it-works</i> | | |
| Contact: | Maria Walsh, Heritage in Schools Programme Manager, The Heritage Council Tel: 056-7770777 Email: mwals@heritagecouncil.ie | | |

Kilkenny Recreation and Sports Partnership

Funding Authority: *Kilkenny Recreation and Sports Partnership*

Application Process: *Application Form (online/paper)*

ELIGIBLE WORKS

Grants are available for the following streams:

1. **Club Development Grant** – *This grant is designed to support clubs and volunteers to increase participation in sport and physical activity in Kilkenny. This fund aims to encourage the setup of new clubs and assist existing clubs to attract new participants.*
2. **Women in Sport Support Fund**-*This fund is designed to enable clubs and organisations to develop programmes that specifically target and support women’s participation in sport.*
3. **Dormant Accounts Volunteer Support Fund** – *This fund is designed to enable clubs and organisations to increase the number of people of all ages playing a leadership role in developing sports and physical activity in their communities.*





| | | | |
|-----------------------|---|--|------|
| Target Group: | | Sports Clubs affiliated to a National Governing Body of Sport. Community Groups and Organisations. (Differs between funding programmes). | |
| Budget: | Varies depending on funding programme | Closing Date: | None |
| Match Funding: | No | | |
| Contact: | CSDO, Kilkenny Recreation and Sports Partnership, 5 Dean Street, Kilkenny Tel: 056-7794991 Email: info@krsp.ie Facebook: www.facebook.com/Kilkennysports | | |

Local Enhancement Programme 2024

Funding Authority: The Local Enhancement fund is funded by the Department of Rural and Community Development (the Department) and administered by the Local Community Development Committees (LCDCs) in each Local Authority area.

Application Process: Application Form, Internal Evaluation, LCDCs are responsible for allocating funding to projects in their area as they are ideally placed to identify suitable local projects.

ELIGIBLE WORKS

The Local Enhancement Programme will support groups, particularly in disadvantaged areas, to carry out necessary repairs and improvements to their facilities and purchase equipment. This is a capital funding scheme. Example of projects that may receive funding, are development/renovation of community centres, accessibility improvements, purchase of equipment, laptops or tablets, maintenance of premises including painting and repairs.



| | | | |
|-----------------------|--|----------------------|--------------------|
| Target Group: | Locally based community groups and voluntary groups in disadvantaged urbans and rural areas, and not for profit organisations. | | |
| Budget: | €151,822 €25,303 Ringfenced Women's Groups | Closing Date: | 16th February 2024 |
| Match Funding: | Not required | | |
| Contact: | Cora Nolan, Community Department, Kilkenny County Council, Patricks Court, Patricks Street, Kilkenny, R95 N28F Tel: 056-7794931 Email: communitygrants@kilkennycoco.ie | | |

Local Enterprise Office

| | |
|-----------------------------|--|
| Funding Authority: | <i>Local Enterprise Office Kilkenny, Kilkenny County Council</i> |
| Application Process: | <i>Formal Application Process for Grant Support Schemes</i> |

ELIGIBLE WORKS

ARE YOU IN BUSINESS OR THINKING ABOUT SETTING UP A BUSINESS?

Local Enterprise Office Kilkenny provide services to new and established businesses in county Kilkenny. These include:

- *Business Information, Signposting and Advice*
- *Enterprise Development Training including Start Your Own Business Courses*
- *One-to-One Business Specific Mentoring*
- *Business Expansion Services including Management Development Training and LEAN Business process programmes*
- *Direct Financial Assistance**

** Where eligibility criteria are met, the Local Enterprise Office Kilkenny offers a range of financial supports to assist the start-up, and expansion of small businesses in the manufacturing and export services sectors:*

- *Priming Grant (for business trading less than 18 months)*
- *Business Expansion Grants (for businesses trading greater than 18 months)*
- *Feasibility Study/Innovation Grants*
- *Technical Assistance for Micro-Exporters*
- *Microfinance Ireland Loan Scheme*
- *Trading Online Voucher Scheme – aimed at micro-enterprise.*



| | | | |
|-----------------------|-----|--|---------|
| Target Group: | | Entrepreneurs & Small Business Owners (Businesses with 10 employees or less) | |
| Budget: | TBC | Closing Date: | Ongoing |
| Match Funding: | | 50% requirement for grant aid schemes | |
| Contact: | | <p>Local Enterprise Office Kilkenny, Kilkenny County Council, John Street, Kilkenny Tel: 056-7752662 Email: info@leo.kilkennycoco.ie #makingithappen <i>For up to date information on events- Follow us on Facebook, Instagram & Twitter</i></p> | |

<https://www.localenterprise.ie/kilkenny>

Local Improvement Schemes (LIS)

Funding Authority: *Dept of Rural & Community Development*
Application Process: *Application Form, internal evaluation & submission to Department*

ELIGIBLE WORKS

The Local Improvement Scheme (LIS) provides funding to help local authorities carry out improvement works on private and non-publicly maintained roads. Often these roads lead to a number of homes, farms or fields in use, or to lakes, rivers and beaches.

Eligible roads under the Local Improvement Scheme are:

- *Non-public roads that provide access to parcels of land, or provide access for harvesting purposes (including turf or seaweed) for two or more persons; or*
- *Non-public roads leading to important community amenities such as graveyards, beaches, piers, mountains.*

Non-eligible roads include:

- *Roads serving only houses or buildings occupied or used by persons not engaged in Agriculture, and*
- *Roads leading to commercial enterprises.*

| | | | |
|-----------------------|--|----------------------|---------|
| Target Group: | Private Residents/Agricultural Farmhouses | | |
| Budget: | TBC | Closing Date: | Ongoing |
| Match Funding: | The maximum amount that any household/landowner is required to contribute is capped at €1,200. | | |
| Contact: | <p>Municipal District Castlecomer Castlecomer Area Office. Tel: 056-7794450</p> <p>Municipal District Kilkenny City, City Hall. Tel: 056- 7794516</p> <p>Municipal District Callan/Thomastown Callan Area Office Tel: 056-7794320</p> <p>Thomastown Area Office Tel: 056-7794340</p> <p>Municipal District Piltown, Ferrybank Area Office. Tel: 056-7794270</p> | | |

Outdoor Recreation Infrastructure Scheme

Funding Authority: *Dept of Rural & Community Development*

Application Process: *Applications are prepared and submitted to DRCD by KCC for assessment, selection and approval. If Community Groups, Voluntary Recreational Providers or Social Enterprises identify a suitable project they should contact KCC to discuss proposals.*

ELIGIBLE WORKS

The Outdoor Recreation Infrastructure Scheme (ORIS) supports the development of new outdoor recreational infrastructure and the necessary repair, enhancement or promotion of existing outdoor recreation infrastructure in countryside areas across Ireland. The Scheme is funded under “Our Rural Future” which specifically prioritises the growing outdoor activity tourism sector as part of a long-term vision for a vibrant and sustainable rural Ireland.

Examples: The scheme supports the provision of outdoor infrastructure that is, in the main, freely available to the public. The type of projects typically funded by the Scheme include trails, walkways, cycleways, blueways, mountain access routes, bridleways and open water amenities at rivers.

Some recent projects funded in Kilkenny under the scheme include:

The new Kilkenny Countryside Park at Dunmore, The Windgap Village Loop – Repair & Enhancement Scheme and the Woodstock Gardens – Accessibility Enhancement Scheme.

The funding is aimed at supporting outdoor recreation tourism, a growing tourism sector internationally, which has the potential to have major economic spin off benefits for our rural towns and villages as well as improving the health and well-being of rural communities.



| | |
|-----------------------|---|
| Target Group: | Community Groups, Recreational Providers or Social Enterprises |
| Closing Date: | Varies Annually |
| Budget: | <p>Measure 1: Small Scale Repair/Development/Promotion and Marketing (Up to €30,000);</p> <p>Measure 2: Medium Scale Repair/Upgrade and New Trail/Amenity Development (Up to €200,000);</p> <p>Measure 3: Strategic Large-Scale Repair/Upgrade and New Strategic Trail/Amenity Development (Up to €500,000);</p> <p>Project Development: Will provide funding for the detailed development of projects which would enable them to reach a standard for application under Measure 2 or 3 of ORIS, grant of up to €50,000.</p> |
| Match Funding: | 10% |
| Contact: | <p>Frank Stafford A/Senior Engineer Project Office & Parks Kilkenny County Council Tel: 056-7794441 Email: frank.stafford@kilkennycoco.ie</p> |

Small Business Vacant Premises Incentive Scheme

Funding Authority: *Kilkenny County Council*

Application Process: *Expression of Interest followed by formal application.*

ELIGIBLE WORKS

The purpose of the 'Small Business Vacant Premises Incentive Scheme' is to give an incentive, to a start up business or a small business expanding, to occupy previously vacant commercial property. Entry costs are lowered through a grant related to the level of rates payable on the property (not exceeding €5000p.a.). The grant is based on a correlation to the business's commercial rates paid on a reducing basis of 75%, 50% and 25%, over a three year period. This scheme will allow a business to receive up to €7500 over the three years of the scheme.

Applicants must meet the following criteria:

1. The applicant business must occupy commercial premises that have been vacant for at least 6 months prior to the applicants letting.
2. The applicant business must not have traded in a similar business or premises used for the same purpose within a three kilometre radius prior to opening.
3. The applicant business does not cause displacement to existing businesses locally.
4. The following business categories are excluded:
Betting shops, Casinos, Head Shops, Adult shops, Amusement arcades, Nightclubs/Private members clubs, Moneylenders, Pawn brokers or Cash for Gold Shops, Liquid Tobacco/Electric cigarettes Shops, Tattoo parlours, Sun bed/Tanning studio, Hot Food Takeaways.



| | | | |
|-----------------------|-----------------------------|--|---------|
| Target Group: | | Small Business Owners occupying previously vacant commercial property where rates bill €5000 or less) | |
| Budget: | Up to €7,500 (over 3 years) | Closing Date: | Ongoing |
| Match Funding: | | 75% grant Year 1, 50% grant Year 2, 25% grant Year 3 | |
| Contact: | | Economic Development Officer, Local Enterprise Office Kilkenny County Council. Tel: 056-7752662 Email: info@leo.kilkennycoco.ie | |

<https://www.localenterprise.ie/Kilkenny/Financial-Supports/Small-Business-Vacant-Premises-Scheme/>

Town & Village Renewal

Funding Authority: *Town & Village is funded by Department of Rural and Community Development.*

Application Process: *Expression of Interest following Council Advertisement. Applications developed with communities & submitted by Kilkenny County Council to the Department.*

ELIGIBLE WORKS

Successful expression of Interest Application will demonstrate close collaboration between communities and business interests in the design and delivery of proposed projects and must have the support of the Local Authority.

Examples: Capital Works-Community Centre/
Community projects/shops/cafe/gardens.



| | | | |
|-----------------------|--|--|-----|
| Target Group: | | Towns/Villages population under 10,000 | |
| Budget: | TBC | Closing Date: | TBC |
| Match Funding: | Varies Annually | | |
| Contact: | Kilkenny County Council, Community Development Tel: 056-7794920 Email: community@kilkennycoco.ie | | |

Tyrone Guthrie Residency Bursary

Funding Authority: *Kilkenny County Council.*

Application Process: *Independent panel appointed by Arts Officer*

ELIGIBLE WORKS

Artists of all art forms, based in Kilkenny administrative area, who can show significant achievement in their chosen field. This bursary offers artists the opportunity to spend two weeks at the Tyrone Guthrie Centre, Annaghmakerrig, Co. Monaghan. Providing time to work intensively on a “project” alongside others in a unique environment.





| | | | |
|-----------------------|--|--|-------------------|
| Target Group: | | Individuals to enable them to research/develop existing or new projects. | |
| Budget: | 1-2 weeks residency fully paid | Closing Date: | 22nd January 2024 |
| Match Funding: | NA | | |
| Contact: | <p>Kilkenny County Council Arts Office</p> <p>Tel: 056-7794547</p> <p>Email: artsoffice@kilkennycoco.ie</p> | | |

Vacant Property Refurbishment Grant (Croí Cónaithe Towns Fund)

Funding Authority: *Kilkenny County Council*
Application Process: *Application form*

ELIGIBLE WORKS

The Vacant Property Refurbishment Grant is a grant you can get if you are bringing a vacant property back into use as your permanent home or a rental property. A grant of up to €50,000 is available. An additional top-up grant amount of up to €20,000 can be sought, if the property is derelict (deemed structurally unsound and dangerous). The grant is inclusive of VAT.

Application is by way of receipt of a valid application, which includes a fully completed application form along with all required supporting documentation. The level of grant allocation will be contingent on the works approved by the Local Authority and will be paid based on vouched expenditure following a final inspection by the Local Authority. An SEAI Better Energy Home Scheme Grant may be available in combination with this grant. Works covered by SEAI will therefore not be covered under the Vacant Property Refurbishment Grant. The Local Authority must satisfy themselves that proposed works are not claimed for under any other grant.

Grant details available on the Council website at <https://www.kilkennycoco.ie/eng/services/housing/vacant-property-refurbishment-grant-scheme/>



| | | | |
|-----------------------|--|----------------------|----|
| Target Group: | 1. Owner of vacant/derelict property who wishes to bring the property back into use for residential purposes | | |
| Budget: | Up to max of €50,000 Top-up Grant if Property is Derelict: up to max of €20,000 | Closing Date: | NA |
| Match Funding: | None | | |
| Contact: | Email: vacanthomes@kilkennycoco.ie | | |

How can you help meet Climate Action targets?

In order to meet climate targets, we need everyone in County Kilkenny to play an active role. Many people want to help, but don't know what to do or where to start.

Below are suggestions for actions we can all take which will help to reduce our carbon footprints at home, work, community:



Join a Sustainable Energy Community and avail of a FREE support programme to learn how to make energy improvements and secure funding for your community.

<https://southeastenergy.ie/sectors/community-groups/>



Encourage your GAA club to join the GAA Green Clubs programme.

See [Green Clubs Get Involved \(gaa.ie\)](http://GreenClubsGetInvolved.com)



Reduce your carbon footprint by using public transport, walking and cycling as much as possible. Participate in developing a new Sustainable Urban Mobility Plan for Kilkenny City.

https://kilkennycoco.ie/eng/services/community_culture/kilkennytravel-and-transport/



Reduce your energy use and improve energy efficiency in your home.

<https://www.seai.ie/publications/SEAI-ReduceYourUse-Booklet.pdf>

Reduce food waste in your home.

<https://stopfoodwaste.ie/>



Use your money and purchasing power to buy sustainable products and services where possible. This helps to support the circular economy and avoids producing unnecessary waste and energy. Avail of grants to reduce the carbon footprint of your home, community or business.



Support nature by planting trees, hedges and pollinator-friendly plants in your garden or community. Healthy habitats will absorb carbon and provide green solutions to the climate crisis. Avoid using pesticides where possible.



Kilkenny County Council

KILKENNY COUNTY COUNCIL SUPPORTS CLIMATE ACTION

Where relevant, grant actions should help to build climate resilient communities, and protect people, ecosystems, businesses, infrastructure and buildings from climate change.

Kilkenny Going Green



An Chomhairle Oidhreacht
The Heritage Council



An Roinn Forbartha
Tuaithe agus Pobail
Department of Rural and
Community Development



Clár Éire Ildánach
Creative Ireland
Programme
2017-2022



An Roinn Cultúir,
Oidhreacht agus Gaeltachta
Department of Culture,
Heritage and the Gaeltacht

